



Thank you for your purchase! Please read the following instructions before proceeding with the installation of your glowbe™! The materials you will need are:

1. 2x 12 spoke glowbe™ hubs (duh!)
2. To build a full-sized glowbe (approximately 5' in diameter) you will need 100' length 1" **solid white** PEX tubing. You must use **COILED PEX**, not the straight sections you would use for the iglow. Home Depot carries this product, and can be shipped to your door if you do not have a location that carries it.
3. A ratcheting tube cutter, to cut your coiled PEX into 12x 8' lengths. A hacksaw will also work.
4. Six (6) IP68 LED strips (HD strips @ 60 LED/m are preferred, but 30 LED/m will work). DO NOT use IP67 "hollow jacket" strips. IP67 strips do not contain the solid silicon-filled jacket that allows the IP68 strips to excel in ruggedness and weather resistance. PiXeL Paradise USA carries strips with the best color accuracy and warranty.
5. 2x 1/2" steel floor flanges. Also 1" flat head machine screws & nuts OR zip ties to secure the flanges to hubs.
6. 5' length of 1/2" galvanized threaded pipe (sphere) or a 4' length for a flattened sphere.
7. A 5' length of 1/2" rebar to provide a secure mounting base for the glowbe.

- Assembly -

As with any 3D print, **care must be taken to support the hub to avoid overstressing the joints**, causing failure. It is recommended to have 2 people install your glowbe (it's also more fun and goes a lot faster!)

\*\*\*Assembling your glowbe in a **warm climate/heated garage will make the PEX much easier to work with.**

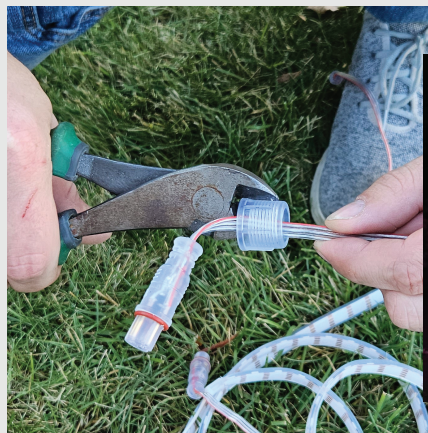
You will first need to cut your 8' PEX tubes. Since it is difficult to measure a curved tube, you may want to measure a string and then use the string to cut your first tube at 8'. Once you have your first tube cut, use it as a template to cut your remaining 11 pieces.

Assemble your floor flanges to your hubs. You can use short bolts, or if you're lazy, use some meaty zip ties to secure the flanges to the bottom of each hub. Now thread your pipe into each flange until VERY snug, and holes on the top and bottom hubs are approximately lined-up. If you are planning on doing a "twisted" PEX installation, you will need make sure these hubs do not unscrew from your center pipe, or it will lose the twist. If you want the ability to change the height/appearance of your glowbe without having to disassemble the glowbe entirely, you may want to consider using a 1/2" pipe **union** and several smaller threaded nipples. Now slide your hub assembly over a 1/2" piece of rebar or have someone hold the center pipe to begin the PEX assembly process. Also, we recommend spray-painting your center pipe black to make it invisible at night.

Turn for page 2!



@PixelParadiseUSA



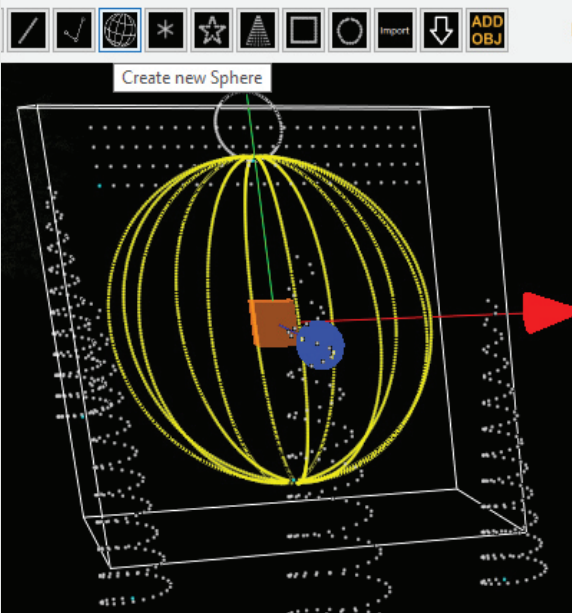
# GLOWBE HUB




Now Unroll all LED strips and **TEST** them with a pixel tester before installing them into the PEX. We recommend labeling each male pigtail 1-6, as once you insert your strips through, it is easy to lose track of which is which when they all get pulled out from the lower hub. You will need to cut and remove the xConnect collar from each female end, otherwise the PEX tube will not fully seat properly at the bottom hub. Then begin feeding the male xConnect end of your LED strips through each 8' section in a clockwise fashion (**don't skip around!**).

**- START AT THE BOTTOM - END AT THE BOTTOM -**

Insert the lower portion of the pex tube into the bottom hub. Ensure the female xConnect pigtail is pulled through enough to have the strip in the proper placement inside the PEX arches and **BE SURE THAT THE PEX TUBE IS FULLY SEATED (UNTIL YOU FEEL A STOP)**. Now insert each LED strip through the top hub, and the opposite PEX tube. To accomplish the "twisted" look, attach each PEX tube to a hole that is one or two holes offset from top to bottom. Using more than 2 holes offset could put too much stress on the hub and could cause failure.



Once you have inserted all of your PEX and strips through, have one person lift up the glowbe enough so that the other can pull all 6 male pigtails out from under the hub. Make sure that each PEX circle is in sequential port order so xlights effects display correctly. It is best to use the SPHERE object in xlights to model your glowbe.



That's it! if you also decide to add a top ring for an ornament, a 3rd glowbe is used, with two additional floor flanges and a 8" pipe nipple to anchor the upper ring. A matrix mesh can then be added to complete the look.

Additional installation photos and videos can be found on our facebook page. Check us out!

@PixelParadiseUSA

